
VIVIX-S Portable, Wireless

Wireless Portable Flat Panel Detector
for Digital Radiography



VIVIX-S Portable, Wireless is a Vieworks' 14" x 17" flat panel detector for general radiographic applications using its unique image processing system. With the size the same as that of CR cassette or films, it fits into almost all existing bucky trays. It is easy to acquire and instantly transmit images to the DICOM server through Wi-Fi network. The battery charger can recharge up to 3 batteries at the same time within 2 hours. An additional tether cable connection to the detector can also recharge the battery without removing it from the detector. Inside AP™ enables customers to take X-ray examinations directly to a computer or a laptop with Wi-Fi connection. In case of disconnection of Wi-Fi network between the detector and the image acquisition software, the detector can save up to 100 images at its on-board memory. After resuming communication with the detector, all saved images can be transmitted to the software.

VIVIX

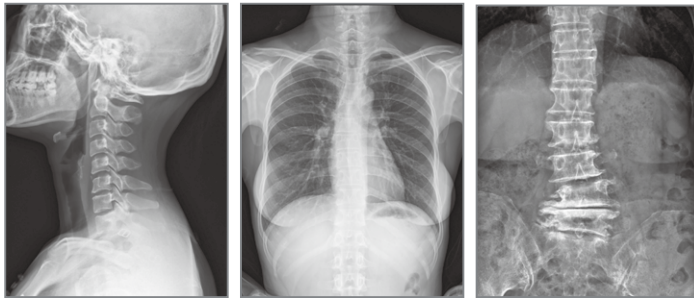
Features

- * Wide active area of 14" x 17"
- * High spatial resolution with 140um pixel array
- * Wi-Fi data transfer with dual band (2.4GHz and 5GHz)
- * Stable and reliable automatic exposure detection (Anytime™)
- * Direct communication with smart devices (Inside AP™)
- * Viewer software running on Windows™ OS (VXvue™)



Configuration
Detector FXRD-1417WA/B
System Control Unit FXRS-03A
Charger FXRC-01A
Designed and manufactured by Vieworks in Korea

Acquired Images



Drawing



Technical Specification

| | |
|---------------------------|--|
| Application | General radiography |
| Technology | Flat panel detector : a-Si TFT with PIN diode |
| Scintillator | CsI:Tl / Gd ₂ O ₂ S:Tb |
| Pixel Pitch | 140um x 140um |
| Pixels | 2,560 x 3,072 pixels |
| Image Size | 14 x 17 inches (35 x 43cm) |
| A/D Conversion | 14 bit |
| Grayscale | 16,384 steps |
| X-ray voltage range | 40 ~ 150kVp |
| X-ray generator Interface | Line trigger : DR Trigger Mode Auto trigger : AED (Automatic Exposure Detection) Mode |
| Wireless Interface | IEEE 802.11a/b/g/n (2.4GHz/5GHz dual band) |
| Dimensions | 460 (W) x 384 (L) x 15 (T) mm |
| Weight | Approx. 3.3kg (GADOX) / 3.4kg (CsI) |
| Operating Environment | 15 ~ 35°C, 30 ~ 85% RH (non-condensing) |
| Power | DC24V, 0.5A (Wired Mode) / 7.4V 4,000mAh Lithium Ion Polymer Battery |

* Specifications are subject to change without prior notification.



Headquarters

41-3, Burim-ro 170 beon-gil, Dongan-gu, Anyang-si, Gyeonggi-do, 431-060 Republic of Korea

Tel +82-70-7011-6161 Fax +82-31-386-8631 E-mail sales@vieworks.com

www.vieworks.com